



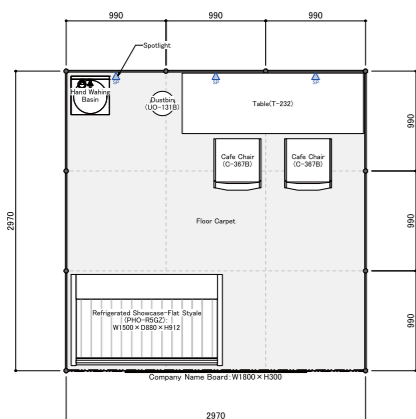
Plan A (Tasting plan)

1 Booth JPY278,300 (including 10% tax) W2,970×D2,970×H2,700

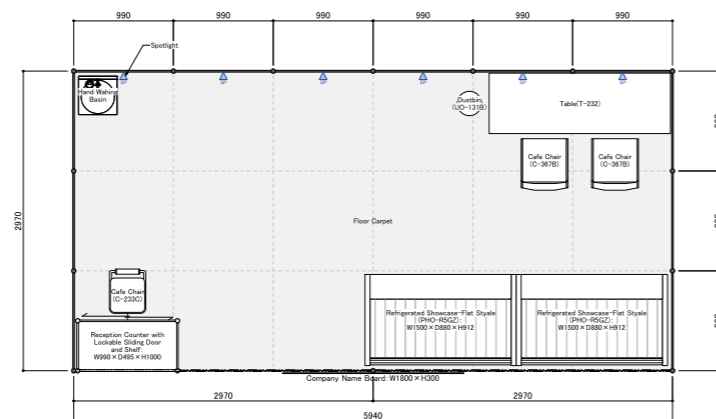
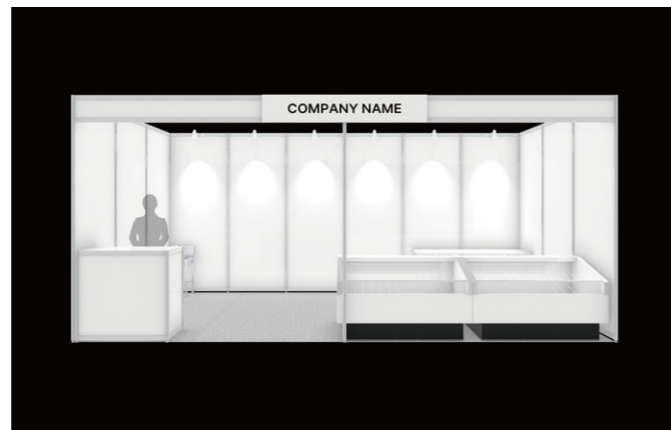
2 Booths JPY423,500 (including 10% tax) W5,940×D2,970×H2,700

※This plan is only for 1 or 2 booths either. For more 3 booths, please contact TCS directly.

1 Booth



2 Booths



1 Booth

Floor carpet	
9.0 sq.m of floor space + carpet	1 set
System works	
Fascia board	1 set
Electrical works	
Spotlight (100V/15W)	3 pcs
Sign works	
Company name on fascia board (Black Gothic Font)	1 set
Leased furnitures	
Long table	1 pc
Cafe chair	2 pcs
Dust bin	1 pc
Selectable Chiller / Freezer	1 pc
S. Short Dairy Case - Curved T. High - Clear Display Chill	
U. Cold Table - Refrigerator V. Basic Stocker - Freezer	
W. Cold Table - Freezer X. Island Chiller ※Additional Fee 22,000JPY (includig tax)	
Y. Island Freezer ※Additional Fee 44,000JPY (includig tax)	
Electrical works	
Electric outlet	1 pc
Electrical wiring work and consumption charges for 100V/3kw	
Sink Work	
Hand washing basin (Water consumption fee will be charged during exhibition)	

2 Booths

Floor carpet	
18 sq.m of floor space + carpet	1 set
System works	
Fascia board	1 set
Electrical works	
Spotlight (100V/15W)	6 pcs
Sign works	
Company name on fascia board (Black Gothic Font)	1 set
Leased furnitures	
Long table	1 pc
Cafe chair	2 pcs
Dust bin	1 pc
Reception Counter with lockable door	1 pc
Counter Chair	1 pc
Selectable Chiller / Freezer	2 pcs
S. Short Dairy Case - Curved T. High - Clear Display Chill	
U. Cold Table - Refrigerator V. Basic Stocker - Freezer	
W. Cold Table - Freezer X. Island Chiller ※Additional Fee 22,000JPY (includig tax)	
Y. Island Freezer ※Additional Fee 44,000JPY (includig tax)	
Electrical works	
Electric outlet	3 pcs
Electrical wiring work and consumption charges for 100V/5kw	
Sink Work	
Hand washing basin (Water consumption fee will be charged during exhibition)	



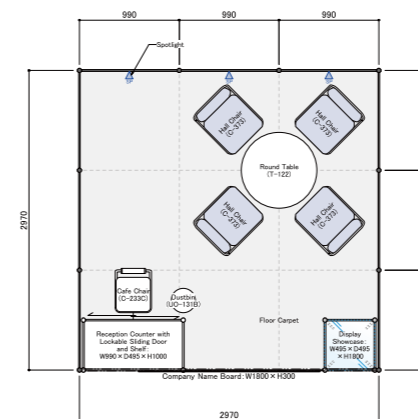
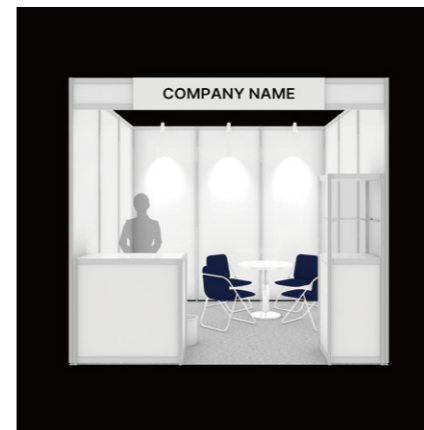
Plan B

1 Booth JPY231,000 (including 10% tax) W2,970×D2,970×H2,700

2 Booths JPY462,000 (including 10% tax) W5,940×D2,970×H2,700

※This plan is only for 1 or 2 booths either. For more 3 booths, please contact TCS directly.

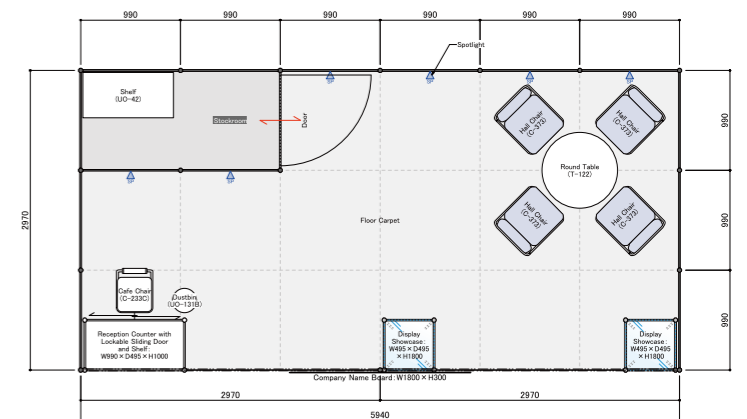
1 Booth



1 Booth

Floor carpet	
9.0 sq.m of floor space + carpet	1 set
System works	
Fascia board	1 set
Electrical works	
Spotlight (100V/15W)	3 pcs
Sign works	
Company name on fascia board (Black Gothic Font)	1 set
Leased furnitures	
Display showcase / covered 3 sides (white)	1 pc
Hall chair	4 pcs
Cafe chair	1 pc
Reception counter	1 pc
Round table	1 pc
Dust bin	1 pc
Cleaning Service	
Booth cleaning for 4 days	1 set
Electrical works	
Electric outlet	1 pc
Electrical wiring work and consumption charges for 100V/1kw	

2 Booths



2 Booths

Floor carpet	
18 sq.m of floor space + carpet	1 set
System works	
Fascia board	1 set
Stock Room (with Lockable door)	1 set
Electrical works	
Spotlight (100V/15W)	6 pcs
Sign works	
Company name on fascia board (Black Gothic Font)	1 set
Leased furnitures	
Display showcase / covered 3 sides (white)	2 pcs
Hall chair	4 pcs
Cafe chair	1 pc
Reception counter	1 pc
Round table	1 pc
Dust bin	1 pc
Cleaning Service	
Booth cleaning for 4 days	1 set
Electrical works	
Electric outlet	2 pcs
Electrical wiring work and consumption charges for 100V/2kw	



Chiller / Freezer options for Plan A

Chiller / Freezer (It may be replaced Item, on the status of application)

S Short Dairy case - Curved



W900×D750×H1208(100V / 558W)
5°C to 10°C

T High - Clear Display Chill



W500×D535×H1768(100V / 262W)
3°C to 10°C

U Cold Table - Refrigerator



W1500×D600×H800(100V / 246W)
0°C to 12°C

V Basic Stocker - Freezer



W1351×D730×H893(100V / 128W)
-24°C to -20°C

W Cold Table - Freezer



W1500×D600×H800(100V / 342W)
-23°C to -18°C

Z Showcase - Freezer



W1500×D600×H880(100V / 372W)
-25°C to 5°C

Chiller / Freezer ※Additional fee will be charged

X Island Chiller

*Additional fee : JPY22,000 (including tax)



W1500×D880×H912(100V / 500W)
-2°C to -18°C

Y Island Freezer

*Additional fee : JPY44,000 (including tax)



W1500×D900×H890(3 phase - 200V / 1700W)
-22°C to -20°C

Carpet Color Sample (Please select the color)

Brown (T45) / Red (T51) / Orange (T13) / Green (T28) / Blue (T27) / Grey (T05)

